

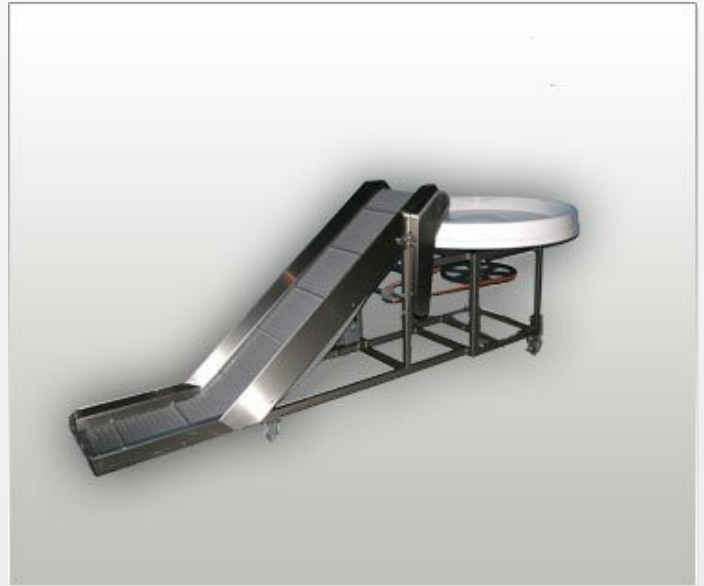


Packaging Incline Conveyor with Pack Off Turntable

Rotating stations allows packers to continuously pull product from the conveyor line

Product Description

- Ergonomic design to reduce the effort and strain of packaging product
- Customized design to meet line requirements
- Easy to clean for the food and beverage industry
- Integrated line controls with variable speeds
- Heavy duty stainless steel construction



Contact us today to discuss solutions for your project.
sales@psg-dallas.com

Related Products



Tank Farms, Corn Soak Systems



Platforms, Mezzanines & Stairways



Sanitary Process Conveyor



Mixing Use Tank Skid

Project Management • Engineers • Fabricators • Installers

Project Services Group • 2040 Century Center Blvd Suite #10 • Irving TX 75062 • (972) 812-7370 • sales@psg-dallas.com